

As we head further into the term, the coughs and colds are definitely starting to make their way around the school. We really appreciate your support in helping us maintain strong attendance over the coming weeks, while also keeping tamariki home when they are unwell. It's always a balancing act at this time of year, and we thank you for working alongside us.

Across the school, we are right in the middle of our science inquiries and absolutely loving our QWEST topics. There are so many faces full of wonder, curiosity, and excitement throughout the classrooms at the moment. One of my favourite moments this week was hearing a Taumata learner tell her mum that she should go home and try the science experiment too! Moments like that are exactly why we love creating young scientists at KPS.

In the coming weeks, you will have opportunities to pop into school and be part of our **"Share the Learning" experiences around science**. No doubt the children will be incredibly excited to show you what they have been learning and exploring.

We also have our Coffee Mornings coming up, a wonderful opportunity for whānau to come into classrooms, see learning in action, and learn alongside us.

Education has changed over the years, and these sessions are designed to help you see what teaching and learning looks like at KPS today. You'll be able to see Structured Literacy, mathematics, and The Code (our spelling programme) in action within classrooms.

In Week 5, we are hosting a Structured Literacy Morning- an opportunity to visit our junior classrooms, observe Structured Literacy teaching in action, watch our amazing Whaea Dana working with a small group, and ask questions about the programme.

Of course, great coffee and muffins will also be served!

Please note this event has now moved to **Tuesday 19 May, 9:30-10:30am** due to school photos taking place the following day.

Next week we also celebrate Pink Shirt Day. At KPS, we work hard to grow our KPS learning powers and values every single day. Each morning begins with intentional teaching around our school values:

- Kia Kaha – Be Strong
- Kia Maia – Be Brave
- Kia Manawanui – Be Kind
- Kia Angitu – Be Successful

Alongside this, we teach our learning powers and help our tamariki understand how these shape them as KPS ākonga. Over the past few weeks, classes have been focusing on KPS Thinker (Kia Maia)-thinking carefully about the choices we make,

the strategies we use, and the positive attitudes we bring to learning.

Pink Shirt Day strongly reflects the KPS ethos.

It is about reducing bullying by celebrating diversity in all its forms and supporting our children to be safe, supportive, welcoming, and inclusive.

We hope you will support this important kaupapa by wearing pink or mufti on the day and bringing along a gold coin donation.

Have a lovely weekend.

Maria

Contact Us:

A: Aquarius Drive, Rotorua 3010

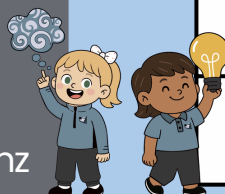
PH: Office -07 348 5864

M: Principal - 027 233 0476

E: office@kps.school.nz

Facebook: Kawaha Point School

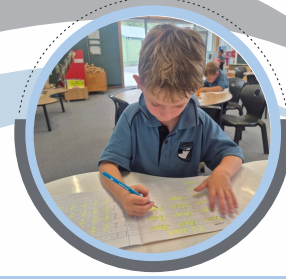
Website: www.kawaha-point.school.nz



Upcoming Events

Date	Event
Monday 11 th May	BOT Meeting 5.15pm
Friday 15 th May	Pink shirt day- or mufti gold coin
Friday 15 th May	Assembly Ngongotaha 11 on item 9.30
Friday 15 th May	Hot chips \$4 Harveys Kai
Thursday 21 st May	School Cross country and BBQ 1-3pm
Friday 22 nd May	Movie night at school 5-7pm

KPS Attendance 2026



ATTENDANCE- EVERY DAY COUNTS

It is our shared responsibility and is very important that school and whanau work together to support attendance. The **Ministry of Education (MOE)** is responsible for services and initiatives designed to support schools to monitor and improve attendance. Schools and kura must have attendance policies and procedures, and they must record and report on attendance.

Whānau - parents and caregivers must make sure their children are at school every day, and let the school know on the day if they're absent. If you do not let us know the reason for your child's absence it is recorded as UNJUSTIFIED.

The current guidelines also state that for more than 9 days of **UNJUSTIFIED** absence the school is responsible to inform whanau and offer support and take action.

Please let us know when your child is going to be away from school and the reason. You can do this by:

- **Calling the office on 073485864** and leave a message on the answerphone or with our office administrators.
- **Connect to the HERO app** and leave a note of absence.
- **Let your child's class teacher** know they will be absent. If you have any questions please do not hesitate to ask

Mrs H

**Days Missed = Years lost
A day here and there doesn't seem
like much, but...**

When your child misses just...	... they miss	... and
1 day a fortnight =	4 weeks per year =	1 year over their school life
1 day a week =	8 weeks per year =	2.5 years over their school life



**Congratulations to Angitu 7- You had the best attendance for Week Two!
Who will win best attendance for Weeks 3 and 4**

*Kia Kaha- Be Strong * Kia Maia- Be Brave * Kia Manawanui- Be Kind * Kia Angitu - Be Successful*



Week One of Term Two Overall attendance...

Week two attendance...

87%

Week three attendance...

88%



Nau mai, Haere mai!

A warm welcome to our new students!!



**Caezar
Taumata 9**



**Chrorus
Kaiweka 17**



**Capri
Ngongotaha 11**



**David
Angitu 7**



**Te Rangiatea
Taumata 3**



**Jamie
Angitu 8**

Congratulations to our principal reward recipients!!



**Bailey
Taumata 3**



**Journey
Taumata 4**



**Nixon
Taumata 9**



**Emmerson
Angitu 8**



**Arahia
Ngongotaha 14**



**Deikyn
Angitu 7**



**Ezra-Lei
Kaiweka 15**



**Braxton
Kaiweka 16**



**Teiyah
Kaiweka 17**

PINK SHIRT DAY



FRIDAY 15TH MAY



WEAR PINK

Wear pink and show your support.



DONATE

Go to the Pink Shirt Day official site

<https://fundraise.pinkshirtday.org.nz/>
and donate online.



MAKE A DIFFERENCE

Stand together, be kind, and help stop bullying.



TOGETHER WE CAN
MAKE A DIFFERENCE!



THANK YOU FOR SUPPORTING A GREAT CAUSE!
TOGETHER WE CAN MAKE A DIFFERENCE.



KPS SCHOOL EVENTS FOR APRIL AND MAY

DATE	EVENT
MON 20TH APRIL	First day back term 2 Miss Davis starts in Taumata 3
THURS 23RD APRIL	PTA Meeting 5.15pm in the staffroom
MON 27TH APRIL	ANZAC Holiday- observed- School closed
TUES 28TH APRIL	Lockdown drill at school- practice
FRI 1ST MAY	Mini Marathon School Assembly- Ngongotahā 11 9.30
FRI 8TH MAY	Special Wāhine afternoon 1.30-3pm
MON 11TH MAY	BOT Meeting 5.15pm in the staffroom
FRI 15TH MAY	Pink shirt day School assembly Ngongotaha 11 9.30
THURS 21 MAY	School Cross Country at 1pm



KPS SCHOOL EVENTS FOR MAY- JUNE

DATE	EVENT
FRI 22ND MAY	Movie Night - 5pm-7pm Camp Fundraiser
THURS 28TH MAY	Share the learning- science
FRI 29TH MAY	Teacher Only day- school closed
MON 1ST JUNE	Kings Birthday - no school- school closed
MON 8TH JUNE	BOT meeting 5.15pm
FRI 12TH JUNE	Assesmbly- Angitu 7- 9.30am
TUES 23RD JUNE	Parent Interviews 3-6.30pm with reports
WED 24TH JUNE	Parent Interviews 3-6.30pm
WED 1ST JULY	Matariki breakfast



KPS SCHOOL EVENTS FOR JUNE- JULY

DATE

EVENT

**FRI
3RD JULY**

**Formal assembly
End of term 2**

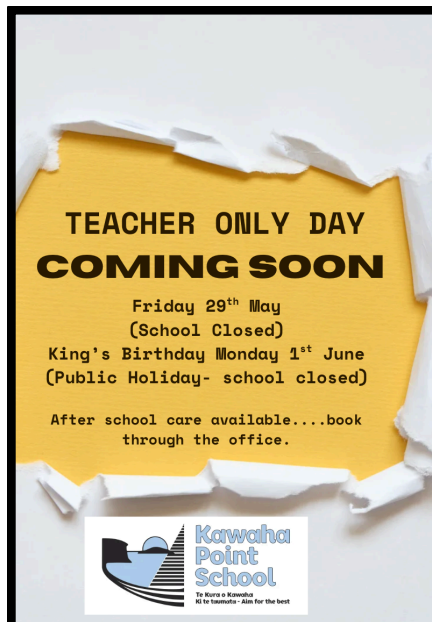
Information mornings- come along and find out how we teach the code- structured literacy and Maths

**TUES 19TH
MAY**

9.45 coffee and a chat and see teaching in action.

**WED
3RD JUNE**


9.45 coffee and a chat and see teaching in action.



**TEACHER ONLY DAY
COMING SOON**

Friday 29th May
(School Closed)
King's Birthday Monday 1st June
(Public Holiday- school closed)

After school care available....book through the office.




KPS CROSS COUNTRY
THURSDAY 21ST MAY
KAWAHA POINT SCHOOL BACK FIELD

Time are approximate

First race 1pm

Come and support our tamariki!

BBQ -\$2 sausage and Juices for sale



Great teaching and learning everyday!