

KAWAHA POINT NEWSLETTER

WEEK 4
AUG 7TH - 11TH
FOLLOW US ON FACEBOOK -
KAWAHA POINT SCHOOL



Our School

Ki Te Taumata- Aim for the Best



PRINCIPAL'S PEN

Kia ora, namaste, aloha, hello and Welcome to week 4!

At Monday's night board meeting, we shared our mid-year data. We are pleased with the achievement made by all our learners. Especially the progress our children are making. We are so excited by the engagement and learning that is taking place here at KPS, and it is slowly creeping into our results. The hard work is paying off. Some magical effects are happening, from achievement levels in maths to the giant leaps in progress in closing the gap from where the learner was to where they are now. Great work, everyone.

Also, at the board, we spoke about the property. The MOE approved our 10-year property plan, and we are looking forward to carrying out a few property jobs like putting heat pumps into the classes, working with the current reading recovery space, and turning it into a multi-purpose room- a room large enough to gather in! The roof on one of the main blocks needs replacing as well.

The MOE, though, only provides money for the playground areas. And sadly, we are beginning to notice the damage to the Astroturf on the basketball courts. Horses are doing the damage. If you know anyone who rides their horse on our school grounds, please ask them nicely not to. We don't have the money to fix or replace the Astroturf. So once it is damaged beyond repair, our children will miss out! So please, if you could help with a friendly word, we would greatly appreciate it.

The board also chatted about our health curriculum, so we will be posting by the end of the term asking for feedback about the programmes we offer from year 1 to year 6. So keep an eye out for that.

And our wonderful PTA is beginning to organise our Christmas in the park batons put aside Friday, 1st December - we hope to bring the community together- celebrate our school with a small concert, and make some money through Batons Up and food stalls.

We will celebrate the fantastic men in our lives in a couple of weeks with a hearty breakfast to start the day. It is on Friday 1st September. I do hope you will be able to make it!

Have a wonderful week, everyone. Thank you for your care and support.

Piki te Ora. Maria and the wonderful staff at KPS

TERM 3

Week 5

Mon 14th Aug - Whaea Sheree begins in Space 6

Wed 16th Aug - Cake stall fundraiser for camp

Friday 18th Aug - House Activities Mufti Day and BBQ fundraiser for Jump Jam.

Week 6

Thurs 24th Aug - League 9's at Puketawhero Fields

Fri 25th Aug - Tough Guy and Girl Challenge

Fri 25th Aug - camp disco at lunchtime

Fri 25th Assembly - space 16

Week 7

Monday 28th Aug - Road Safety Juniors

Fri 1st Sept - Special men in our lives brekkie 7.30 onwards

Week 8

Mon 4th Sept - BOT Hui 5.30pm

Wed - Fri 6-8th Sept - Mi Camp Taupō year 5s

Fri 8th Sept - Assembly space 3

Fri 8th Sept - Jump Jam fundraiser BBQ and mufti day

KAWAHA POINT SCHOOL
Aquarius Drive, Rotorua 3010
Office-07 348 5864
Principal- 0272330476



30TH JUNE 2023

MRS H HIGHLIGHTS

FROM JENNY HERMANSSON OUR DP

Kia ora Whanau welcome to week 4

Great to see so many KPS CITIZENS, THINKERS and EXPLORERS, keep up the amazing LEARNING!

Just a REMINDER. If you child is away from school PLEASE contact the school - via, HERO ap, or phoning the office to let us know the reason for your child being away.

PUNCTUALITY

School starts at 9.00 each day. It is great to see so many whanau getting tamariki to school before the bell rings. We encourage all children to be at school on time as it sets them up for a great day of learning. We understand things happen and it may not always be possible to get here by 9.00, but constant lateness and absence impacts on student learning and interactions at school. If you need help with, please come in and see us, we are here to support all our children and whanau.

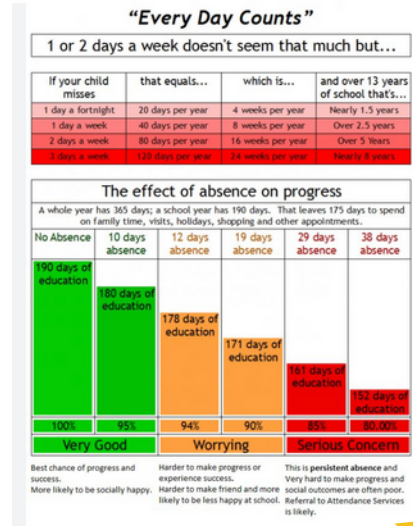
Nga mihi,

Jenny Hermansson
Deputy Principal



Preschool Buddies:

Every TUESDAY at 1.30pm. Please meet in the office foyer to be shown around by Cullen and Adele, our school Head Boy and Head Girl..Then your child will spend some time with me, going through some fun activities before joining one of our Year 1 classes for the rest of the afternoon.



WELCOME TO KPS!



**The Myler
Brother!**
Silas and Charles
Space 14
&
Edison - Space 5



SERA - Space 6



CENIC - Space 9

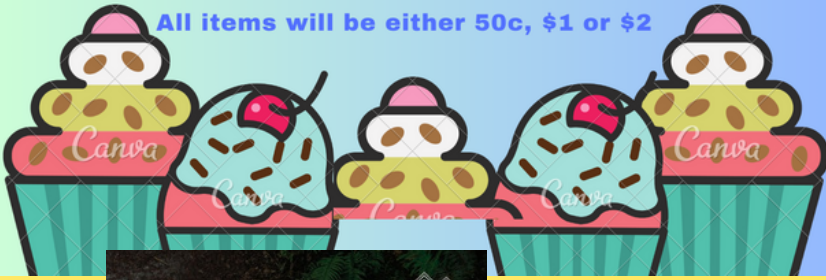


COMMUNITY NOTICES

WEDNESDAY 16TH AUGUST - 10.45AM

Year 5 Camp Fundraiser Cake Stall

All items will be either 50c, \$1 or \$2



LEGEND OF THE PEAKS
A RUNNING AND WALKING FESTIVAL WITH 20KM, 50KM, 100KM AND 210KM DISTANCES AVAILABLE ALONG WITH THE PREMIER EVENT, THE 42KM NEW ZEALAND FOREST MARATHON. CHECK OUT LEGENDOFPEAKS.COM

RUN WITH LEGENDS, EMBRACE THE CHALLENGE AND BECOME A TRUE LEGEND OF THE PEAKS

MISSING!!!!

HAVE YOU SEEN OUR FAMILY DOG??



VERY DISTINCTIVE DOG with one blue eye and one brown eye, he is very loved, and we want him home!
PLEASE GET IN CONTACT 0223455735

YEAR 6 TRANSITION TO ROTORUA INTERMEDIATE

School Orientation Visits

Year 6 students will visit Rotorua Intermediate on Tuesday 29th August or Wednesday 30th August



Open Evening

Thursday 31st August 5:30pm to 6:30pm in the RI gym - for year 6 students and their whanau.

Year 6 Entrance Testing

Takes place at primary schools during August/September. Catch-up testing is at Rotorua Intermediate on 21st September at 9am.



Enrolments

Enrolments can be done online or in person, these are due in by the end of term 3 - Friday 22nd September.

Whanau Meetings

10th or 11th October - establishing a working and supportive partnership and getting to know your child.



Visit our website www.rotorua-intermediate.org.nz

Please contact Stephanie Chand for further information Stephaniec@Rotorua-Intermediate.org.nz



To speak to someone about MathsBuddy, call us at 0800-299-182

MathsBuddy is the perfect online maths program for families. It consists of over 1,400 video tutorials and 50,000 interactive questions developed by experienced maths teacher, Pat Murray. MathsBuddy helps guide your children lesson by lesson allowing them to pause, rewind and repeat all or part of any video tutorial until they fully understand it. Covering Year 1 through to Year 13, MathsBuddy is a comprehensive, current curriculum based tool ideal for all families.



MathsBuddy features:

- ✓ Clear step-by-step video tutorials
- ✓ Clear step-by-step video tutorials
- ✓ Interactive questions and worksheets to test understanding
- ✓ Printable one-page summaries with complete notes
- ✓ Worked solutions showing each step to the answer
- ✓ Automatic marking and progress reports to highlight areas needing support

Over 290,000 children are already using MathsBuddy.

Start your MathsBuddy FREE trial today at <https://mathsbuddy.co.nz/free-trial>

KAWAHA POINT
SCHOOL

JUMP JAM 4 STAR JAM

Friday 18th August 2023

Gold Coin Donation

Kawaha Point School is taking part in JUMP JAM 4 StarJam 2023 on Friday 18th August.

This exciting event will help Kawaha Point School to raise awareness around disability and promote health and wellness in our community. Please show your support and donate a gold coin and receive a cool StarJam wristband. All funds raised will go to StarJam so they can continue to help young people with disabilities to unleash their potential through the magic of music, dance and performance

